

# CORBA PV Bicyclist Trail Recommendations



## Concerned Off-road Bicyclists Association Palos Verdes

Accept PUMP recommendations with suggested changes.

**Forrestal - Alta Vicente - Agua Armaga - Ocean Trails - San Ramon - No changes**

**Canyons ER** initially had **18.3** miles of trails (includes **3.4** miles of fire roads) or **2.14%** of reserve area. Pump recommendations leave **9.4** miles of trails or **1.39%** of reserve area. CORBA PV recommends adding **0.8** miles of trails or **0.05%** of reserve area.

▪**All roadways should be multi-use**

Burma Road, Fire Station, Water Tower, Ishibashi Farm, Peppertree

▪**Paintbrush** – old, overgrown road cut that may need to be restored to facilitate vehicle access east of Burma Road for habitat restoration. Grade suitable for families to access Paintbrush Canyon viewpoint (best view point in the reserve).

▪**Pine Grove** – Pedestrian/Bike

Point to point route to be determined, enhance trail experience, families, kids, dispersion of users.

**Donor One** - Multi-use upper, Pedestrian/Bike lower portion.

Disperses users, trail variety. *Short reconfiguration needed on upper portion, repair needed on lower section.*

▪**Garden** - Multi-use alternative to Burma Road. Access for Portuguese Bend cyclists. , completes loop below Burma Road

**Kubota** – Multi-use alternative to Burma Road, disperses users, completes loop below Burma Road

**Landslide Scarp** - Proposed for multi-use by equestrians 10-2-07 presentation & SUN'P Long Term proposal 10-3-07. Only rideable route from Sandbox. Multi-use Toyon is >20% grade and too sandy to ride up most of the year. *High priority for cyclists.*

▪**North Sandbox** –Multi-use. Old road cut. Required reconfiguration can support all users.

Existing trails to be included

▪**Burma Track** - Pedestrian Bike

*Popular bike trail missed by PUMP Committee, dispersal of users*

▪**Lucky Baldwin** – add existing trails for equestrian loop.

**Lemonade Berry** – Reinstate for pedestrian/equestrian alternate to Paintbrush

## Concerned Off-road Bicyclists Association Palos Verdes

### **Trails for families & kids** (*Non mountain bike destinations*)

Unfortunately bike riding is not allowed in city parks or schools. Allowing bikes on family friendly trails will give them a safe place ride away from cars. It would also be nice to have small play areas, like the dips at the water tank below Del Cerro Park or at some bike safe area in the reserve. Trails are for kids too.

### **Abalone Cove**

- Church View – Wide relatively flat open trail for families with kids. Unobstructed view.
- Beach School – Full drivable road allows bike access to beach.
- Bow & Arrow – Roadway. Safety concerns no different from pedestrians.

### **Vista Del Norte**

- Indian Peak Loop - Add bike use for families and bike route for students to avoid Hawthorne and Crenshaw.

### **Vicente Bluffs**

- Seascape Trail – **Very wide flat fenced trail excellent for families with small kids.**

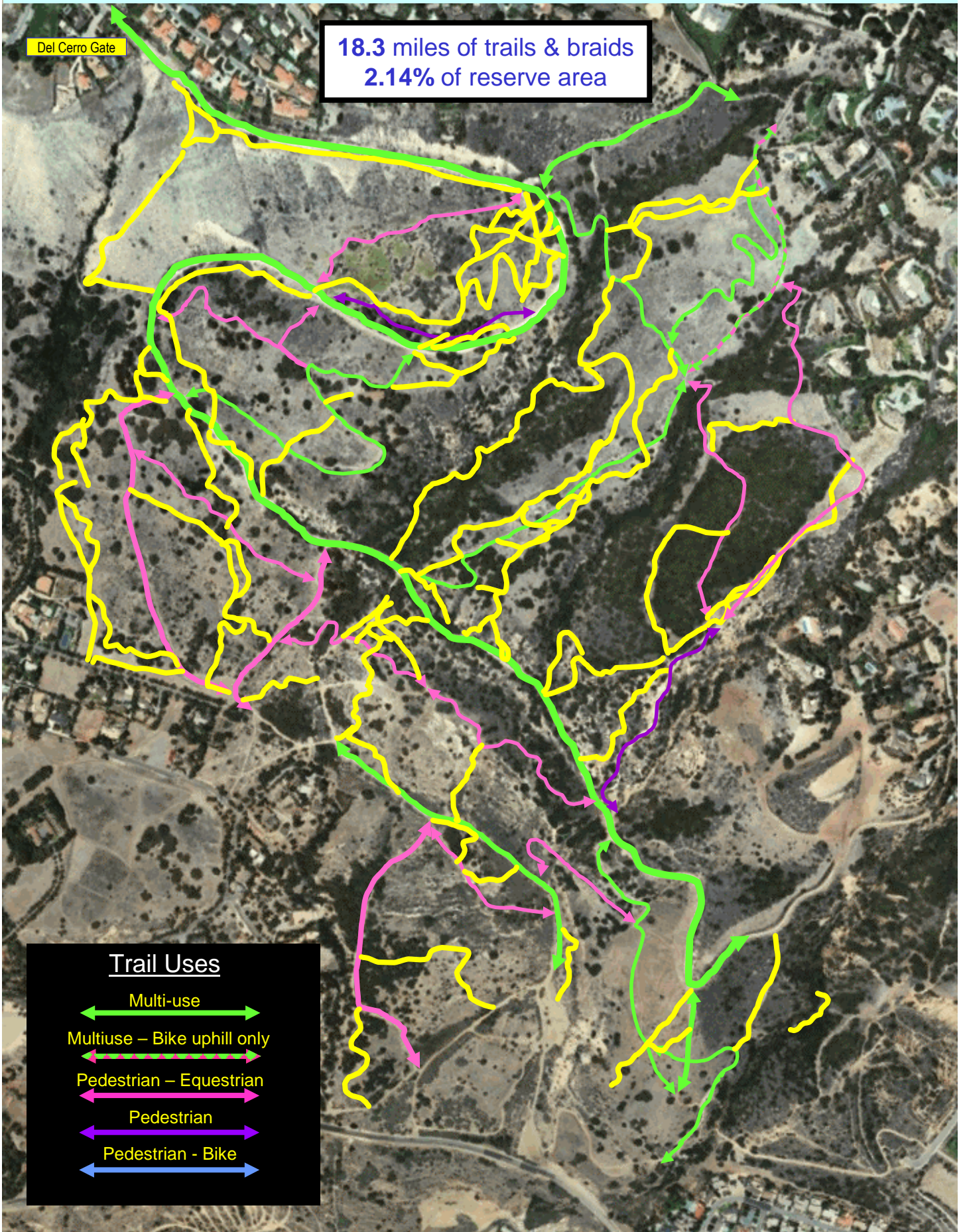
# All Trails Before Recommendations

Del Cerro Gate

18.3 miles of trails & braids  
2.14% of reserve area

## Trail Uses

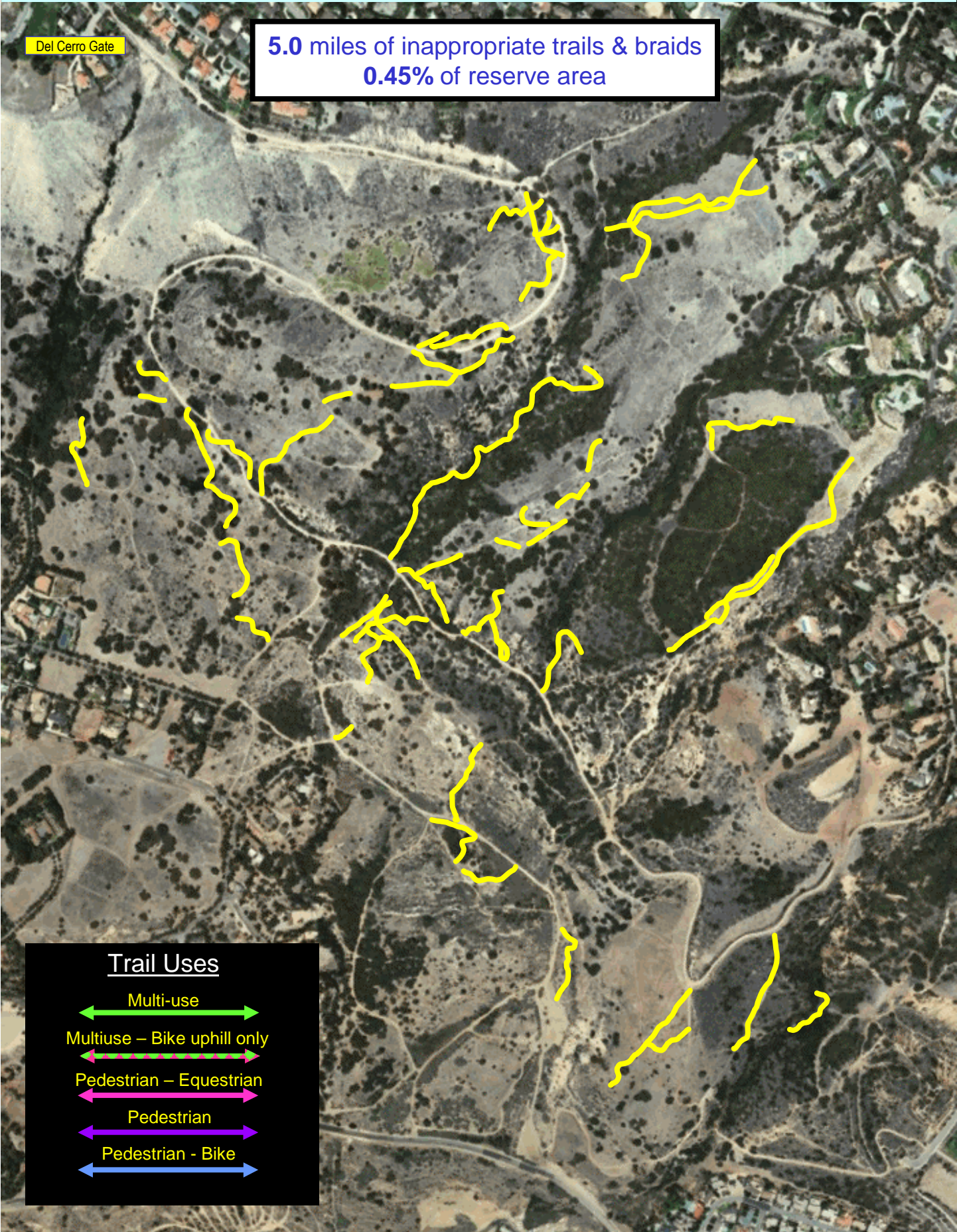
- Multi-use
- Multiuse – Bike uphill only
- Pedestrian – Equestrian
- Pedestrian
- Pedestrian - Bike



# Junk Trails to be Closed

Del Cerro Gate

5.0 miles of inappropriate trails & braids  
0.45% of reserve area



## Trail Uses

- Multi-use
- Multiuse – Bike uphill only
- Pedestrian – Equestrian
- Pedestrian
- Pedestrian - Bike

# Popular Trails to be Closed

Del Cerro Gate

3.9 miles of established trails to be closed  
0.34% of reserve area

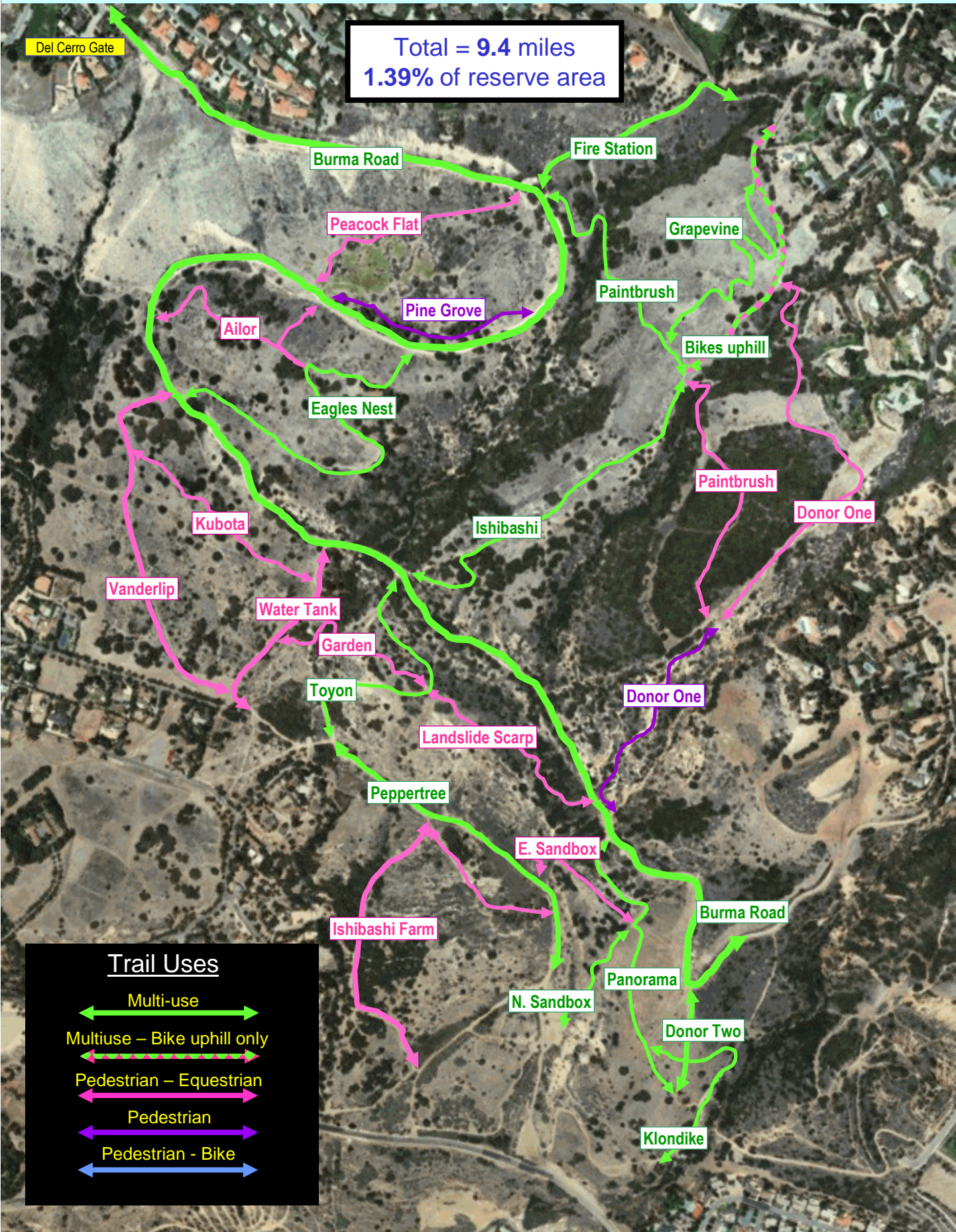


## Trail Uses

- Multi-use
- Multiuse – Bike uphill only
- Pedestrian – Equestrian
- Pedestrian
- Pedestrian - Bike

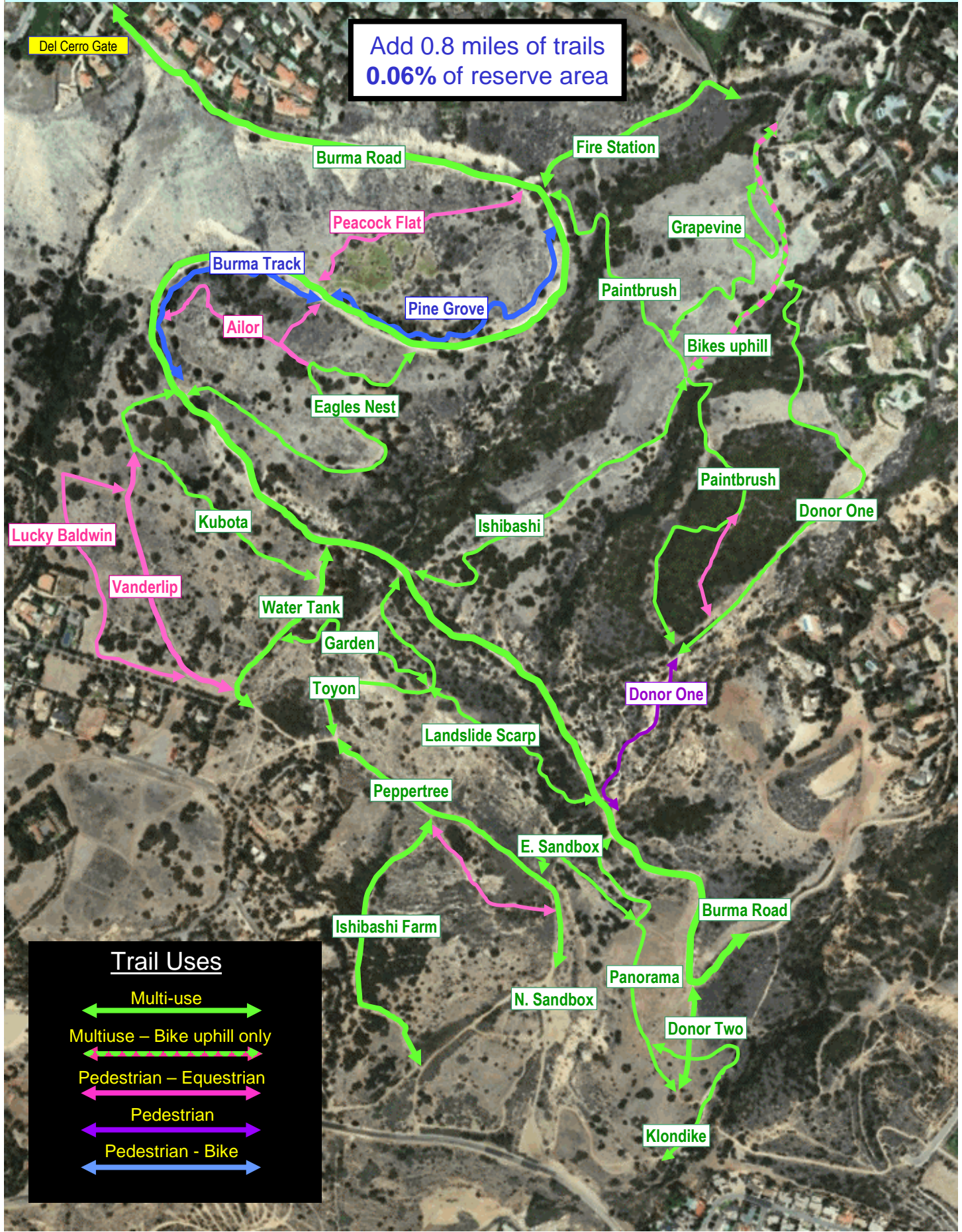
# PUMP Recommendations

Total = 9.4 miles  
1.39% of reserve area



# CORBA PV Suggested changes from PUMP

Add 0.8 miles of trails  
0.06% of reserve area

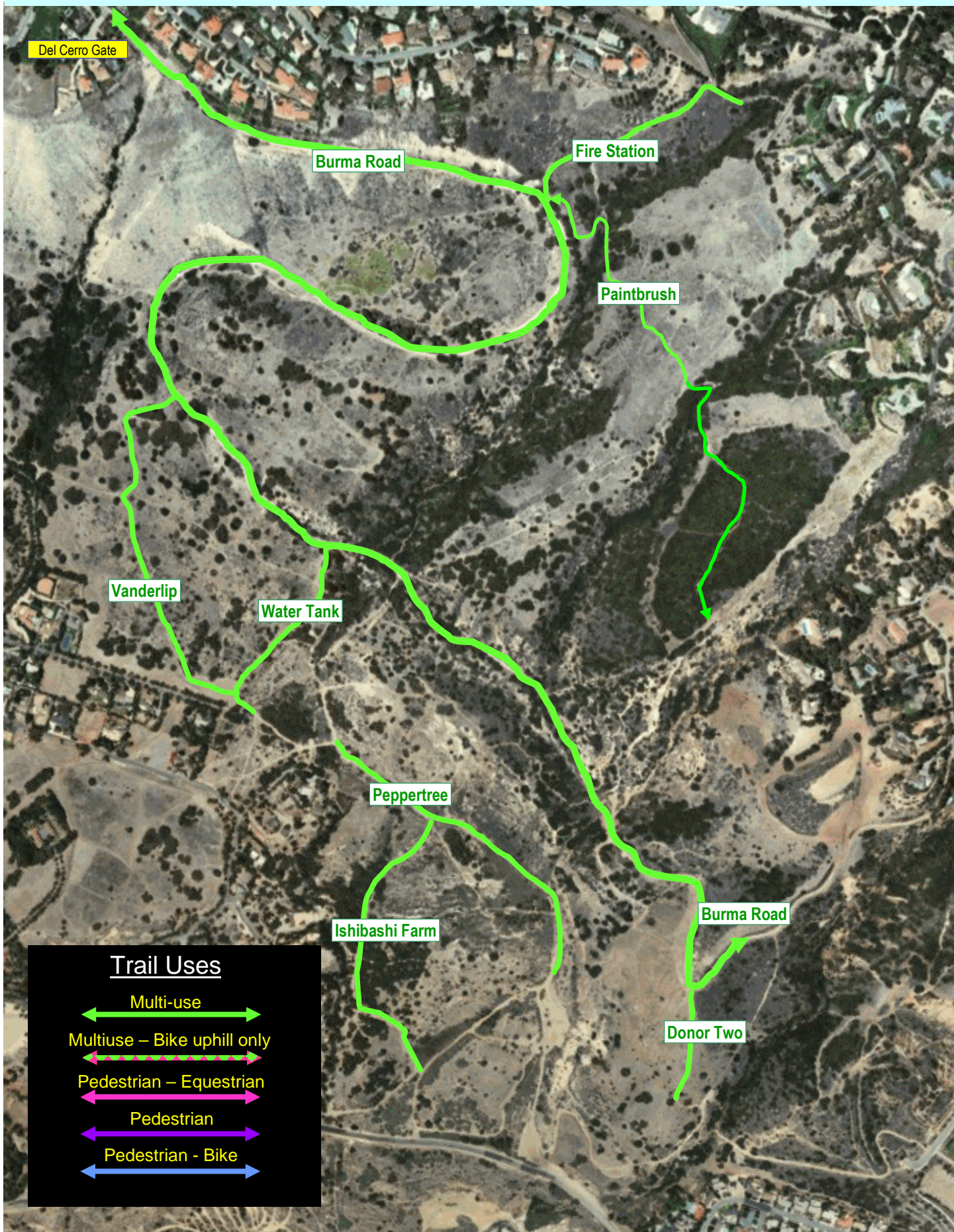


## Trail Uses

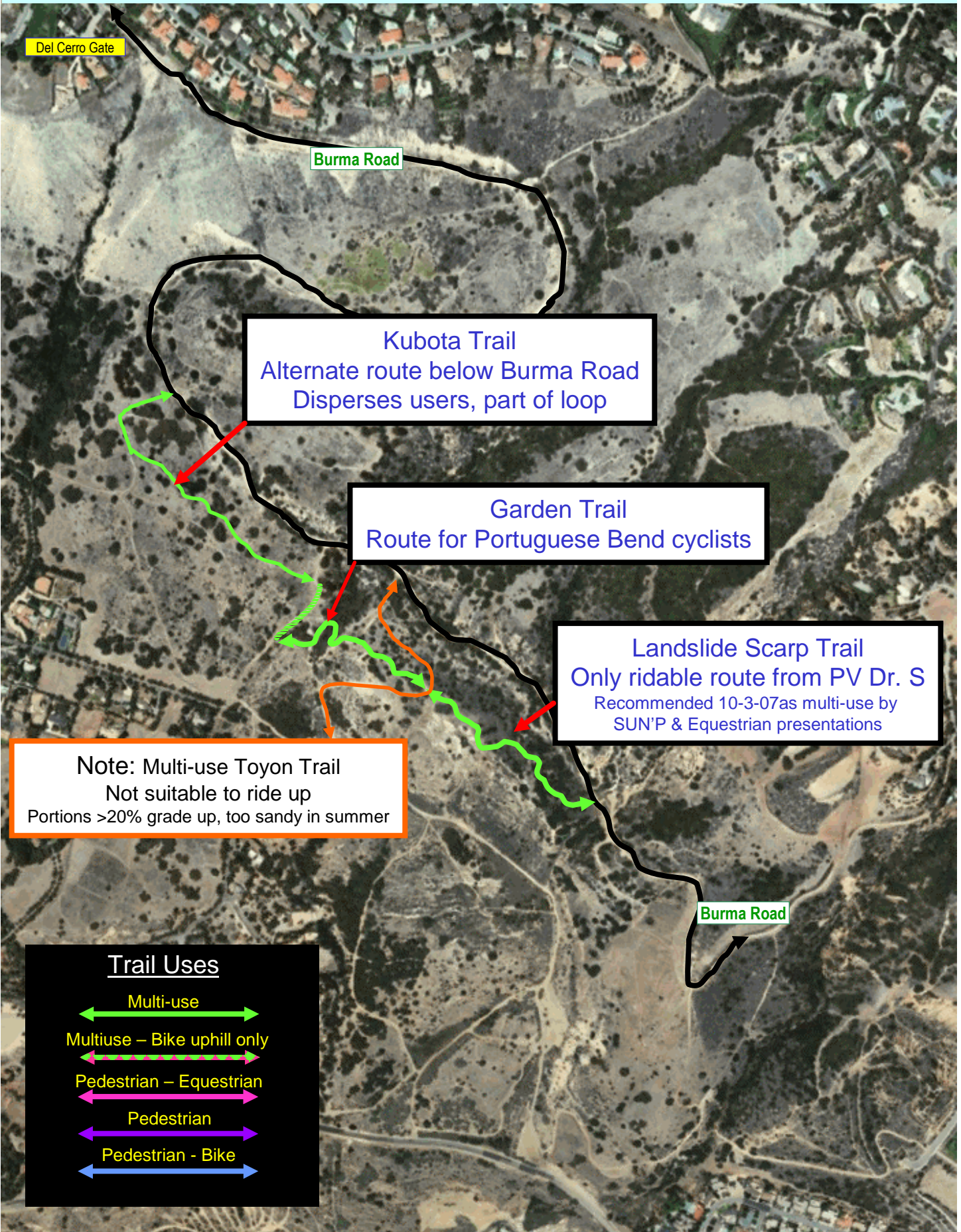
- Multi-use
- Multiuse – Bike uphill only
- Pedestrian – Equestrian
- Pedestrian
- Pedestrian - Bike



# Fire Roads and Old Roadways Multi-use



# CORBA PV - change to multi-use



Del Cerro Gate

Burma Road

**Kubota Trail**  
Alternate route below Burma Road  
Disperses users, part of loop

**Garden Trail**  
Route for Portuguese Bend cyclists

**Landslide Scarp Trail**  
Only rideable route from PV Dr. S  
Recommended 10-3-07 as multi-use by  
SUN'P & Equestrian presentations

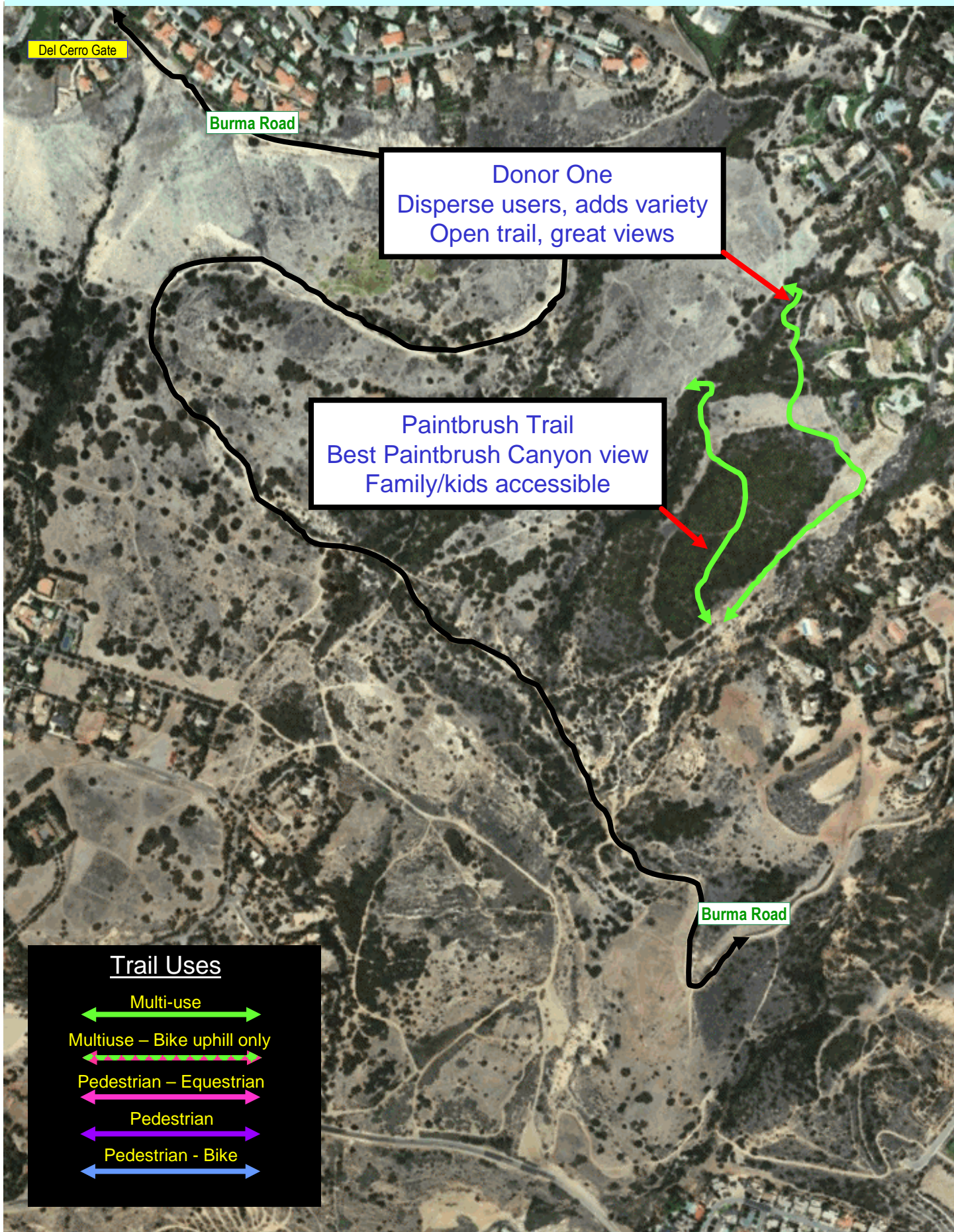
Note: Multi-use Toyon Trail  
Not suitable to ride up  
Portions >20% grade up, too sandy in summer

Burma Road

**Trail Uses**

- Multi-use
- Multiuse - Bike uphill only
- Pedestrian - Equestrian
- Pedestrian
- Pedestrian - Bike

# CORBA PV - change to multi-use



Del Cerro Gate

Burma Road

Donor One  
Disperse users, adds variety  
Open trail, great views

Paintbrush Trail  
Best Paintbrush Canyon view  
Family/kids accessible

Burma Road

## Trail Uses

- Multi-use
- Multiuse - Bike uphill only
- Pedestrian - Equestrian
- Pedestrian
- Pedestrian - Bike

# CORBA PV – Include existing trails

Del Cerro Gate

Add 0.4 miles for pedestrian/bike  
Add trails = 0.03% of reserve area

Burma Road

Burma Track  
Disperses users

Extend Pine Grove  
Family/kids accessible  
Disperses users

Burma Road

## Trail Uses

- Multi-use
- Multiuse – Bike uphill only
- Pedestrian – Equestrian
- Pedestrian
- Pedestrian - Bike

# CORBA PV – Include existing trails

Del Cerro Gate

Add 0.4 miles for pedestrian/equestrian  
Add trails = 0.03% of reserve area

Burma Road

Lemonade Berry Trail  
Popular existing trail  
pedestrian/equestrian  
Disperse users

Lucky Baldwin Trail  
Popular existing trail  
pedestrian/equestrian  
Disperse users

Burma Road

## Trail Uses

- Multi-use
- Multiuse – Bike uphill only
- Pedestrian – Equestrian
- Pedestrian
- Pedestrian - Bike